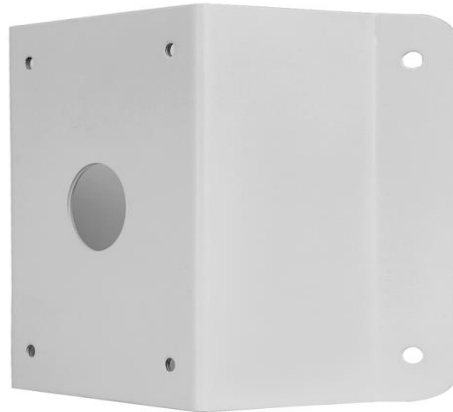


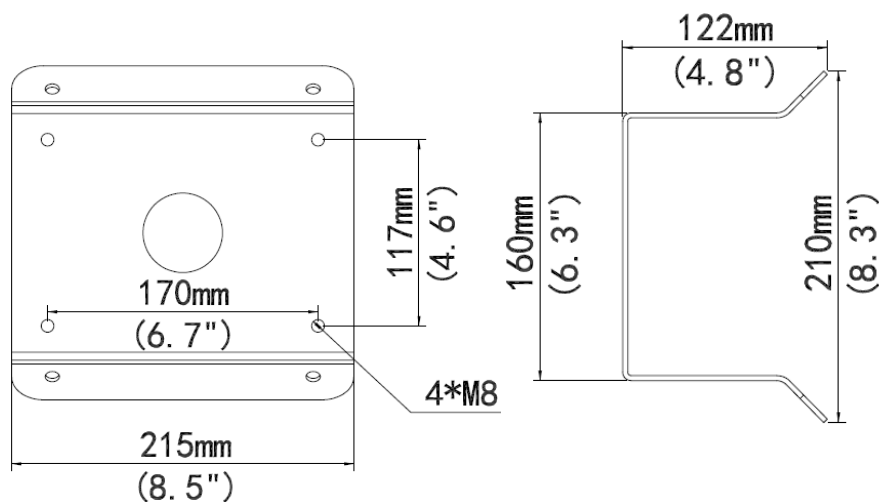
# TR-UC08-A-IN PTZ Dome Corner Mount



## Specifications

Bracket	TR-UC08-A-IN
Application	Indoor or outdoor, PTZ Dome Corner installation
Dimensions(L x W x H)	215mmx210mmx122mm(8.5" x 8.3"x 4.8")
Weight	1.87kg(4.1lb)
Material	Aluminum alloy

## Dimensions



### Zhejiang Uniview Technologies Co.,Ltd.

South Tower, Building 10, Wanlun Science Park, 88 Jiangling Road, Hangzhou, P.R.China 310051

Email: [overseasbusiness@uniview.com](mailto:overseasbusiness@uniview.com); [globalsupport@uniview.com](mailto:globalsupport@uniview.com)

<http://www.uniview.com>

©2013 Zhejiang Uniview Technologies Co.,Ltd. All rights reserved.

\*Product specifications and availability are subject to change without notice.